

**GULF COAST ASSOCIATION OF GEOLOGICAL SOCIETIES**

**TRANSACTIONS**

**31st ANNUAL MEETING**



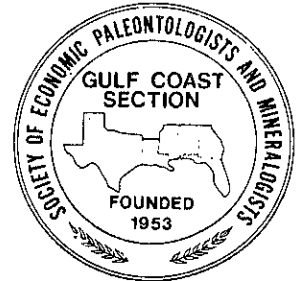
**OCTOBER 21, 22, 23, 1981**

**CORPUS CHRISTI, TEXAS**



# TRANSACTIONS GULF COAST ASSOCIATION OF GEOLOGICAL SOCIETIES

A SECTION OF THE AMERICAN ASSOCIATION OF PETROLEUM GEOLOGISTS



VOLUME XXXI, 1981

**CARLOS M. MAGGIO**

*Editor*

**DOROTHY E. MAGGIO**

*Associate Editor*

**JO ANNE RUSSELL**

*Associate Editor*

PREPARED FOR THE  
Thirty-first Annual Meeting of the  
Gulf Coast Association of Geological Societies  
AAPG REGIONAL MEETING  
AND  
The Twenty-eighth Annual Meeting of the  
GULF COAST SECTION OF THE  
SOCIETY OF ECONOMIC PALEONTOLOGISTS AND  
MINERALOGISTS

**ROBERT G. LOUCKS**

*SEPM Editor*

**DEBORAH J. LOUCKS**

*Associate SEPM Editor*

OCTOBER 21, 22, 23, 1981

Published at  
Corpus Christi, Texas

*Copyright 1981 by the Gulf Coast Association of Geological Societies  
No reproduction without permission of the President of the GCAGS*

Cover Art — H. O. Wyneken, Corpus Christi

**DEDICATION**  
**1981 GCAGS Transactions Volume**  
**To**



**W. ARMSTRONG PRICE**

The officers and Executive Committee of the GCAGS, in conjunction with the officers of the Corpus Christi Geological Society, have the honor and pleasure of dedicating the 1981 *Transactions* volume to W. Armstrong Price in recognition of his contributions to the geological profession and to Gulf Coast geology over the past 60 years.

W. Armstrong Price was born March 27, 1889, in Richmond, Virginia. He graduated from Davidson College in North Carolina in 1909 with an A.B. degree and from Johns Hopkins University in 1913 with a Ph.D. degree in Geology. His thesis subject was *The Pennsylvanian Invertebrates of Maryland*.

Between 1913 and 1919 he mapped lignites in Wyoming and North Dakota with the USGS; taught at the University of West Virginia; and served in the Army of the United States, honorably discharged in 1918.

Armstrong Price came to the Gulf Coast for the first time in 1920. Here he has remained. His first Gulf Coast assignment was to map surface geology in the Panuco area of northeast Mexico for the Transcontinental Oil Co., a subsidiary of Standard Oil. In 1921 Dr. Price mapped the subsurface geology of Mexia field for the Humphries Oil Co. and, for a short time, assisted Alexander Deussen in Houston. In 1924 Dr. Price returned to Mexico as a consultant, and in 1927 he moved to Corpus Christi where he consulted on the subsurface geology of Saxet and White Point fields.

In 1935 he was Vice-President, in 1936 President, and until 1946 a Director of the Texas Academy of Science. He helped to organize the Corpus Christi Geological Society in 1942 and served as its first President.

From 1947 until 1949 Dr. Price was retained by Humble Oil & Refining Co. (now Exxon Company, U.S.A.) to study Pleistocene and Recent sedimentation on the Texas Gulf Coast.

Armstrong Price left Corpus Christi in 1950 to teach Geological Oceanography at Texas A&M for four years. After his retirement he continued at Texas A&M for an additional year as a Research Associate with the Office of Naval Research. He taught the first course in Marine Geology at the University of Corpus Christi.

Since his return to Corpus Christi in 1954, Armstrong Price has continued as an active consulting geologist and contributor to the well-being of the Corpus Christi community.

Dr. Price was recognized by the GCAGS for presenting one of the best papers at the convention of 1967; he was a recipient of the SEPM, Francis P. Shepard Award in 1973. He is the author of more than 150 technical papers and innumerable abstracts.

The Gulf Coast Association of Geological Societies is proud to acknowledge the service of Dr. W. Armstrong Price, Gulf Coast geologist, teacher, and citizen.

H. O. Wyneken

## TABLE OF CONTENTS

TITLE PAGE .....	I
DEDICATION TO W. ARMSTRONG PRICE .....	II
OFFICERS AND EXECUTIVE COMMITTEE, GCAGS .....	VII
OFFICERS OF MEMBER SOCIETIES, GCAGS .....	VIII
REPORT OF THE PRESIDENT, GCAGS, Paul M. Strunk .....	X
REPORT OF THE GENERAL CHAIRMAN, 1981 MEETING, Wilson Humphrey .....	XI
REPORT OF THE TRANSACTIONS EDITOR, Carlos M. Maggio .....	XII
ORGANIZATION, THIRTY-FIRST ANNUAL MEETING .....	XIII
BEST PAPER AWARDS, GCAGS, THIRTIETH ANNUAL MEETING .....	XV
CONSTITUTION AND BYLAWS, GCAGS .....	XVII
PAST OFFICERS AND CONVENTION CHAIRMEN, GCAGS .....	XX
HONORARY MEMBER, GCS-SEPM, Frank E. Lozo, Jr. ....	XXI
OFFICERS, BUSINESS REPRESENTATIVES, COMMITTEES, AND HONORARY MEMBERS, GCS-SEPM .....	XXII
REPORT OF THE PRESIDENT, GCS-SEPM, Bob F. Perkins .....	XXIII
BEST PAPER AWARDS, GCS-SEPM, TWENTY-SEVENTH ANNUAL MEETING .....	XXIV
BYLAWS, GCS-SEPM .....	XXVI
PAST OFFICERS, GCS-SEPM .....	XXIX
PUBLICATIONS OF GCAGS .....	XXX
PUBLICATIONS OF GCS-SEPM .....	XXXII
ADVERTISERS INDEX .....	431

## TECHNICAL PAPERS AND ABSTRACTS GCAGS

THE GILMER LIMESTONE: OOLITE TIDAL BARS ON THE SABINE UPLIFT by Wayne M. Ahr .....	1
DEPOSITIONAL AND DIAGENETIC CYCLES IN SMACKOVER LIMESTONE-SANDSTONE SEQUENCES, LINCOLN PARISH, LOUISIANA by Wayne M. Ahr and Gregory J. Palko .....	7
LATE JURASSIC REEFS OF THE SMACKOVER FORMATION — A PRELIMINARY REPORT (Abstract) by Lawrence R. Baria, David L. Stoudt, Paul M. Harris, and Paul D. Crevello .....	18
WAVELAND FIELD: AN ANALYSES OF FACIES, DIAGENESIS, AND HYDRODYNAMICS IN THE MOORINGSPOUT RESERVOIRS by Lawrence R. Baria .....	19
DEEP-WATER RESERVOIR SANDSTONES OF THE TEXAS GULF COAST by Robert R. Berg .....	31
PETROGRAPHIC ANALYSIS OF THE PETTET POROSITY IN THE KERLIN OIL FIELD, COLUMBIA COUNTY, ARKANSAS by Gary D. Boland, Austin A. Sartin, and Dan Knight .....	41
WALKER CREEK REVISITED: A REINTERPRETATION OF THE DIAGENESIS OF THE SMACKOVER FORMATION OF WALKER CREEK FIELD, ARKANSAS by Frank C. Brock, Jr. and Clyde H. Moore, Jr. ....	49
LINEAMENT ANALYSIS AND INFERENCE OF GEOLOGIC STRUCTURE — EXAMPLES FROM THE BALCONES/OUACHITA TREND OF TEXAS by S. Christopher Caran, C. M. Woodruff, Jr., and Eric J. Thompson .....	59
STRATIGRAPHIC, SEDIMENTOLOGIC, AND DIAGENETIC FRAMEWORK FOR THE JURASSIC COTTON VALLEY TERRYVILLE MASSIVE SANDSTONE COMPLEX, NORTHERN LOUISIANA by James L. Coleman, Jr. and Craig J. Coleman .....	71
STRUCTURAL CONTROL OF LOWER VICKSBURG (OLIGOCENE) TURBIDITE CHANNEL SANDSTONES, McALLEN RANCH FIELD, TEXAS by Louis A. Dramis, Jr. ....	81
THE ERUPTION OF MOUNT ST. HELENS (Abstract) by Allen J. Fiksdal .....	89
CHARACTERIZATION OF URANIUM ORES FROM THE HOUSE-SEALE DEPOSIT, CATAHOULA FORMATION, TEXAS COASTAL PLAIN by R. Stephen Fisher .....	91
ABNORMAL FORMATION PRESSURES: RECOGNITION, DISTRIBUTION, AND IMPLICATIONS FOR GEOPHYSICAL PROSPECTING, BRAZORIA COUNTY, TEXAS by T. Edward Flanigan .....	97
THE TUSCALOOSA-WOODBINE TREND: TRACKING ITS UNIQUE PRESSURE PROFILES (Abstract) by J. A. Gill .....	104

SOURCE-ROCK POTENTIAL OF THE AUSTIN CHALK, UPPER CRETACEOUS, SOUTHEASTERN TEXAS by George J. Grabowski, Jr. ....	105
DIAGENETIC CLAYS IN A TIGHT SANDSTONE OF THE OLMOS FORMATION, MAVERICK BASIN, TEXAS (Abstract) by Necip Guven and Alonzo D. Jacka .....	114
DIAGENESIS AND SECONDARY POROSITY IN VICKSBURG SANDSTONES, McALLEN RANCH FIELD, HIDALGO COUNTY, TEXAS by Marcia J. Klass, David G. Kersey, Robert R. Berg, and Thomas T. Tieh .....	115
GEOLOGY OF THE SUBSURFACE EOCENE COCKFIELD FORMATION IN SOUTHERN ALLEN PARISH, LOUISIANA by Jeff Lautier .....	125
INCOME TAX CONSEQUENCES OF OIL AND GAS PROPERTY INTERESTS RECEIVED FOR SERVICES by Kenton E. McDonald .....	135
PETROLEUM GEOLOGY OF SOUTH CARLTON FIELD, LOWER TUSCALOOSA "PILOT SAND", CLARKE AND BALDWIN COUNTIES, ALABAMA by Ernest A. Mancini and J. Wayne Payton .....	139
NEAR-SURFACE LIGNITES OF THE WILCOX GROUP IN EAST-CENTRAL TEXAS (Abstract) by D. Mathew, M. A. Bauer, and S. J. Tewalt .....	148
ESTIMATION OF UNCERTAINTY IN COAL RESOURCES by D. Mathew and M. P. Roberts .....	149
PETROPHYSICAL PROPERTIES OF THE SLIGO FORMATION OF NORTHERN LOUISIANA AND ARKANSAS by Hugh J. Mitchell-Tapping .....	155
COAL—THE ALTERNATE FOSSIL FUEL by William R. Pampe .....	167
A LATE CRETACEOUS CALCARENITE BEACH COMPLEX ASSOCIATED WITH SUBMARINE VOLCANISM, WILSON COUNTY, TEXAS by Edward C. Roy, Jr., Mark Eidelbach, and Nancy Trumbly .....	173
GULF COAST STRATIGRAPHIC TRAPS IN THE LOWER CRETACEOUS CARBONATES (Abstract) by Richard H. Sams .....	179
GEO THERMAL CONDITIONS AND THEIR IMPLICATIONS FOR BASEMENT TECTONICS IN THE GULF COAST MARGIN by Douglas L. Smith, William T. Dees, and Danny W. Harrelson .....	181
STRATIGRAPHY AND STRUCTURE OF THE ROSITA GAS FIELDS, DUVAL COUNTY, TEXAS by Joseph R. Straccia .....	191
DETAILED EVALUATION OF TWO TEXAS LIGNITE DEPOSITS OF DELTAIC AND FLUVIAL ORIGINS by S. J. Tewalt, M. A. Bauer, and D. Mathew .....	201
ENVIRONMENT OF DEPOSITION AND RESERVOIR PROPERTIES OF THE WOODBINE SANDSTONE AT KURTEN FIELD, BRAZOS COUNTY, TEXAS by James R. Turner and Susan J. Conger .....	213

### TECHNICAL PAPERS AND ABSTRACTS GULF COAST SECTION OF SEPM

SUBDIVISION AND REGIONAL STRATIGRAPHY OF THE PRE-PUNTA GORDA ROCKS (LOWERMOST CRETACEOUS-JURASSIC?) IN SOUTH FLORIDA (Abstract) by Albert V. Applegate, George O. Winston, and James G. Palacas .....	233
DIFFERENTIAL TRANSPORT OF SAND GRAINS: RIPPLES AND DUNES, A SUSPENSION CRITERION (Abstract) by John F. Bourke .....	234
POROSITY REDUCTION THROUGH DUCTILE GRAIN DEFORMATION: AN EXPERIMENTAL ASSESSMENT by D. Joe Benson .....	235
PERMEABILITY AND MICROFABRIC OF CLAYEY SEDIMENTS (Abstract) by William R. Bryant, Louis Thompson, and Wen-An Chiou .....	238
STRUCTURAL PATTERNS IN SOUTH FLORIDA by Paulette Bond, Leah Smith, and W. F. Tanner .....	239
WASHOVER OF DELTAIC BARRIERS ON THE LOUISIANA COAST by Ron Boyd and Shea Penland .....	243
BRIZALINA LOWMANI, A MEROPLANKTONIC FORAMINIFERAN USEFUL AS AN INDICATOR OF SHELFAL CIRCULATION AND EUTROPHICATION (WITH COMMENTS ON BIOSTRATIGRAPHY AND EVOLUTION) by Richard Casey, Camille Hueni, and Ann Leavesley .....	249
ANOXIC SEDIMENTATION IN THE EAGLE FORD GROUP (UPPER CRETACEOUS) OF CENTRAL TEXAS (Abstract) by William A. Charvat and Robert C. Grayson, Jr. ....	256
RADIOLARIAN SPECIES COMPOSITION, DENSITY AND DIVERSITY AS INDICATORS OF WATER STRUCTURE AND CIRCULATION ON THE SOUTH TEXAS SHELF by Richard Casey, Ann Leavesley, Joan Mussler Spaw, Ken McMillen, and Jon Sloan .....	257
PROVENANCE AND DIAGENESIS OF CLAY MINERALS IN SEDIMENTS FROM THE ANCLOTE RIVER AND ANCHORAGE, WEST CENTRAL FLORIDA by Wen-An Chiou, Larry J. Doyle, and William R. Bryant .....	265
EARLY PRECIPITATION OF AUTHIGENIC CLAY BY METEORIC WATER, PICTURED CLIFFS, SAN JUAN BASIN, NEW MEXICO AND COLORADO (Abstract) by Stephen P. Cumella .....	272
RESPONSE OF BOTTOM WATERS ON THE WEST LOUISIANA SHELF TO TRANSIENT WIND EVENTS AND RESULTING SEDIMENT TRANSPORT by Richard L. Crout and Rhett D. Hamiter .....	273

DEPOSITIONAL SYSTEMS OF THE CONTINENTAL MARGIN OF THE EASTERN GULF OF MEXICO WEST OF PENINSULAR FLORIDA: A POSSIBLE MODERN ANALOG TO SOME DEPOSITIONAL MODELS FOR THE PERMIAN DELAWARE BASIN by Larry J. Doyle .....	279
MACROFOSSIL ASSEMBLAGES OF THE MOODYS BRANCH FORMATION (UPPER EOCENE), LOUISIANA AND MISSISSIPPI by Susan R. Elder and Thor A. Hansen .....	283
SHALE MINERALOGY AND BURIAL DIAGENESIS OF FRIO AND VICKSBURG FORMATIONS IN TWO GEOPRESSED WELLS, McALLEN RANCH AREA, HIDALGO COUNTY, TEXAS by Robert L. Freed .....	289
LAND LOSS IN THE MISSISSIPPI RIVER DELTAIC PLAIN by Sherwood M. Gagliano, Klaus J. Meyer-Arendt, and Karen M. Wicker .....	295
FACIES CHANGES IN THE HATCHETIGBEE FORMATION IN ALABAMA-GEORGIA AND THE WILCOX-CLAIBORNE GROUP UNCONFORMITY by Thomas G. Gibson and Laurel M. Bybell .....	301
GENETIC CHARACTERIZATION OF RECENT AND ANCIENT SABKHA SYSTEMS by C. Robertson Handford .....	307
THE NORTHERN GULF OF MEXICO AS AN ANOMALOUS PASSIVE MARGIN by William W. Hay and James F. Behensky, Jr. ....	309
DIAGENESIS AND PORE TYPES OF THE NORPHLET SANDSTONE (UPPER JURASSIC), HATTERS POND AREA, MOBILE COUNTY, ALABAMA by Hiromi Honda and Earle F. McBride .....	315
RELIABILITY OF MICROFOSSIL ASSEMBLAGES AS PALEOENVIRONMENTAL INDICATORS by Mervin Kontrovitz and Scott W. Snyder .....	323
METEORIC WATER VERSUS FORMATION WATER ORIGIN OF SALT DOME CAP ROCK by Charles W. Kreitler and Shirley P. Dutton .....	325
MARINE ENVIRONMENTAL TERMINOLOGY AND DEPTH-RELATED ENVIRONMENTS by James L. Lamb .....	329
DIAGENESIS AND RESERVOIR POTENTIAL OF THE UPPER JURASSIC SMACKOVER FORMATION OF SOUTH TEXAS by R. G. Loucks and D. A. Budd .....	339
DIAGENETIC HISTORY OF NORPHLET FORMATION (UPPER JURASSIC), RANKIN, COUNTY, MISSISSIPPI by Earle F. McBride .....	347
AGE, DEPOSITIONAL ENVIRONMENT, AND ORGANIC METAMORPHISM OF THE WOODBINE (CRETACEOUS) OF POLK COUNTY, TEXAS (Abstract) by R. Leo Newport .....	352
EMENDATION OF THE PECAN GAP CHALK (CAMPANIAN) IN NORTHEAST TEXAS by C. L. McNulty, J. L. Brezina, W. C. Dawson, and F. W. Maluf .....	353
LITHOSTRATIGRAPHY AND BIOSTRATIGRAPHY OF PALEOCENE SUBSURFACE STRATA IN SOUTHWEST ALABAMA by Ernest A. Mancini .....	359
DELTAIC BARRIER DEVELOPMENT ON THE LOUISIANA COAST (Abstract) by Shea Penland, Ron Boyd, Dag Nummedal, and Harry Roberts .....	368
PRELIMINARY PETROLEUM SOURCE-ROCK ASSESSMENT OF PRE-PUNTA GORDA ROCKS (LOWER-MOST CRETACEOUS-JURASSIC?) IN SOUTH FLORIDA by James G. Palacas, Ted A. Daws, and Albert V. Applegate .....	369
THE OPENING OF THE GULF OF MEXICO: IMPLICATIONS FOR THE TECTONIC EVOLUTION OF THE NORTHERN GULF COAST by Rex H. Pilger, Jr. ....	377
HURRICANE AND STANDING WAVE, LAGOONAL PATTERN MAKERS, TEXAS COAST (Abstract) by W. Armstrong Price .....	382
EFFECTS OF SEA LEVEL CHANGES ON THE DISTRIBUTION AND EVOLUTION OF EARLY TERTIARY MAMMALS by Judith A. Schiebout .....	383
SOME MICROFOSSILS OF THE TAMALIPAS LIMESTONE (HAUTERIVIAN-LOWER ALBIAN) IN SANTA ROSA CANYON, SIERRA DE SANTA ROSA, NUEVO LEON, MEXICO (Abstract) by M. A. Ross and C. L. McNulty .....	388
LATE TERTIARY AND QUATERNARY DEPOSITIONAL SYSTEMS IN THE SUBSURFACE OF CENTRAL TEXAS COASTAL PLAIN by Raul Fernando Solis I .....	389
CHARACTERISTICS OF DIAPIRS ON THE OUTER CONTINENTAL SHELF-UPPER CONTINENTAL SLOPE BOUNDARY, NORTHWEST GULF OF MEXICO by Anita R. Trippet .....	391
EVOLUTION AND MORPHOLOGY OF SEDIMENTARY ENVIRONMENTS, ATCHAFALAYA DELTA, LOUISIANA by Ivor Ll. van Heerden, John T. Wells, and Harry H. Roberts .....	399
ATCHAFALAYA MUD STREAM AND RECENT MUDFLAT PROGRADATION: LOUISIANA CHENIER PLAIN by John T. Wells and G. Paul Kemp .....	409
DEPOSITIONAL ENVIRONMENTS AND REGIONAL STRATIGRAPHY OF JURASSIC NORPHLET FORMATION IN SOUTH ALABAMA by Richard P. Wilkerson .....	417
SEISMIC STRATIGRAPHY AND DEPOSITIONAL HISTORY OF HOLOCENE SEDIMENTS ON THE CENTRAL TEXAS GULF COAST (Abstract) by Stephen S. Wright .....	420
FLUID-INCLUSION TEMPERATURE STUDY OF PALEOZOIC CARBONATES LLANO UPLIFT, TEXAS by Leonard M. Young and D. Herman Jackson .....	421
PALEOECOLOGY OF THE MIDWAY AND WILCOX GROUPS OF ALABAMA by Iradj Youssefnia .....	427

# GULF COAST ASSOCIATION OF GEOLOGICAL SOCIETIES

PRESIDENT .....	Paul M. Strunk American Shoreline, Inc., Corpus Christi, Texas
VICE-PRESIDENT .....	John J. Amoruso Independent, Houston, Texas
SECRETARY .....	Thomas J. Wintermute Independent, Corpus Christi, Texas
TREASURER .....	William R. Payne Independent, Corpus Christi, Texas

## EXECUTIVE COMMITTEE

ALABAMA GEOLOGICAL SOCIETY .....	Ernest Mancini University of Alabama
AUSTIN GEOLOGICAL SOCIETY .....	Robert S. Kier Camp, Dresser, & McKee, Inc.
BATON ROUGE GEOLOGICAL SOCIETY .....	David E. Pope Louisiana Geological Survey
CORPUS CHRISTI GEOLOGICAL SOCIETY .....	Leroy L. Manka Hamilton Bros. Oil Co.
EAST TEXAS GEOLOGICAL SOCIETY .....	Georgiana Ashford Independent
HOUSTON GEOLOGICAL SOCIETY .....	Chester Baird The Dow Chemical Co.
LAFAYETTE GEOLOGICAL SOCIETY .....	M. H. "Bud" Oakes Sanchez-O'Brien
MISSISSIPPI GEOLOGICAL SOCIETY .....	Stephen M. Oivanki Consulting Geologist
NEW ORLEANS GEOLOGICAL SOCIETY .....	Charles J. Corona Consulting Geologist
SHREVEPORT GEOLOGICAL SOCIETY .....	Nolan G. Shaw, Sr. Centenary College
SOUTHEASTERN GEOLOGICAL SOCIETY .....	Felipe A. Pontigo Florida Bureau of Geology
SOUTH TEXAS GEOLOGICAL SOCIETY .....	Curtis R. Golson Gulf Energy & Development



## OFFICERS OF MEMBER SOCIETIES GULF COAST ASSOCIATION OF GEOLOGICAL SOCIETIES

### ALABAMA GEOLOGICAL SOCIETY, P. O. Box 6184, University, Alabama 35486

PRESIDENT ..... Gerald S. Granger; Southern Company Services  
 VICE-PRESIDENT ..... Samuel W. Shannon; Alabama State Highway Department  
 SECRETARY ..... Michael Epsman; Geological Survey of Alabama  
 TREASURER ..... Michael W. Szabo; Geological Survey of Alabama

### AUSTIN GEOLOGICAL SOCIETY, P. O. Box 1302, Austin, Texas 78767

PRESIDENT ..... Robert S. Kier; Camp, Dresser, & McKee, Inc.  
 VICE-PRESIDENT ..... Clark R. Wilson; Dept. Geol. Sci., University of Texas  
 SECRETARY ..... Thomas E. Ewing; Bureau of Economic Geology, University of Texas  
 TREASURER ..... Mark K. McGowen; Bureau of Economic Geology, University of Texas

### BATON ROUGE GEOLOGICAL SOCIETY, P. O. Box 19151, Baton Rouge, Louisiana 70893

PRESIDENT ..... Rod E. Emmer; Coastal Environments, Inc.  
 VICE-PRESIDENT ..... Don G. Bebout; Louisiana Geological Survey  
 SECRETARY ..... George H. Cramer, II; Louisiana Dept. of Trans. and Dev.  
 TREASURER ..... Richard H. Kesel; LSU School of Geoscience  
 PAST PRESIDENT ..... David E. Pope; Louisiana Geological Survey

### CORPUS CHRISTI GEOLOGICAL SOCIETY, P. O. Box 1068, Corpus Christi, Texas 78403

PRESIDENT ..... Leroy L. Manka; Hamilton Bros. Oil Co.  
 1ST VICE-PRESIDENT ..... William A. Heintz, Jr.; Independent  
 2ND VICE-PRESIDENT ..... Curtis R. Mayo; Inexco Oil Co., Inc.  
 SECRETARY ..... Craig F. Anderson; Dinero Oil Co.  
 TREASURER ..... Robert Manson; Mormac

### EAST TEXAS GEOLOGICAL SOCIETY, P. O. Box 216, Tyler, Texas 75701

PRESIDENT ..... John Carr; Sunnybrook Oil & Gas Co.  
 VICE-PRESIDENT ..... Paul Goodgame; Independent  
 PAST PRESIDENT ..... Georgiana Ashford; Independent

### HOUSTON GEOLOGICAL SOCIETY, 6916 Ashcroft, Houston, Texas 77081

PRESIDENT ..... William F. Bishop; Tenneco Oil Co.  
 1ST VICE-PRESIDENT ..... Peggy J. Rice; Conoco, Inc.  
 2ND VICE-PRESIDENT ..... Matthew W. Daura; Transcontinental Pipe Line Corp.  
 SECRETARY ..... Gerald A. Cooley; Phillips Petroleum Co.  
 TREASURER ..... Richard R. McLeod; Gulf Oil Exploration & Production Co.

LAFAYETTE GEOLOGICAL SOCIETY, P. O. Box 51896, Lafayette, Louisiana 70501

PRESIDENT ..... H. M. "Bud" Oakes; Sanchez-O'Brien  
1ST VICE-PRESIDENT ..... Mike Huber; Federated Energy Corp.  
2ND VICE-PRESIDENT ..... Phil Dupler; Grigsby-CAP Exploration  
SECRETARY ..... Mike McWilliams; Independent  
TREASURER ..... John Rives; Conoco, Inc.

MISSISSIPPI GEOLOGICAL SOCIETY, P. O. Box 422, Jackson, Mississippi 39205

PRESIDENT ..... Stephen M. Oivanki; Consulting Geologist  
1ST VICE-PRESIDENT ..... James W. Twiner; Petroleum Resources  
2ND VICE-PRESIDENT ..... Charles H. Williams, Jr.; Mid-Continent Oil & Gas Assoc.  
SECRETARY ..... John Marble; Forest Oil & Gas Corp.  
TREASURER ..... Frank Johnson; Inexco Oil Co., Inc.

NEW ORLEANS GEOLOGICAL SOCIETY, P. O. Box 52172, New Orleans, Louisiana 70152

PRESIDENT ..... James A. Seglund; Independent  
VICE-PRESIDENT ..... Ross H. Lessentine; Amoco Production Co.  
SECRETARY ..... Carl E. Grieshaber; Dorchester Exploration, Inc.  
TREASURER ..... Douglas A. Holmes; Shell Oil Co.  
PRESIDENT-ELECT ..... Charles J. Corona; Consulting Geologist

SHREVEPORT GEOLOGICAL SOCIETY, P. O. Box 750, Shreveport, Louisiana 71162

PRESIDENT ..... Nolan G. Shaw, Sr.; Department of Geology, Centenary College  
1ST VICE-PRESIDENT ..... Charles S. Cook; Shreveport Exploration, Inc.  
2ND VICE-PRESIDENT ..... Percy J. Wheeler, Jr.; Wheeler Exploration & Assoc.  
SECRETARY ..... R. Bruce Farmer; Pennzoil Producing Co.  
TREASURER ..... Richard D. Taylor; McConathy & Assoc.

SOUTHEASTERN GEOLOGICAL SOCIETY, P. O. Box 1634, Tallahassee, Florida 32302

PRESIDENT ..... Sam B. Upchurch; University of South Florida  
VICE-PRESIDENT ..... Ron Ceryak; Suwannee River Water Management District  
SECRETARY/TREASURER ..... Richard J. Deuerling, Jr.; Florida Bureau of Geology  
PAST PRESIDENT ..... Felipe A. Pontigo; Florida Bureau of Geology

SOUTH TEXAS GEOLOGICAL SOCIETY, B-100, Petroleum Center, San Antonio, Texas 78209

PRESIDENT ..... Walter W. Coppinger; Dept. Geology, Trinity University  
VICE-PRESIDENT ..... Michael M. Anderson; Valero Corp.  
SECRETARY ..... Jack Richards; Bright & Company  
TREASURER ..... R. L. Musselwhite; Valero Corp.

# REPORT OF THE PRESIDENT GULF COAST ASSOCIATION OF GEOLOGICAL SOCIETIES



**Paul M. Strunk**

On behalf of the Corpus Christi Geological Society, welcome to the thirty-first annual meeting of the GCAGS. We hope that you will enjoy both the convention and your stay in Corpus Christi. Our General Chairman, Wilson Humphrey, and scores of committee chairmen and committee members have worked diligently to make this an excellent convention. My thanks to each of them for their dedicated effort.

Our association, which consists of twelve societies, has a membership of over 9,000 and continues to be the largest Section of the American Association of Petroleum Geologists. A Long-Range Planning Committee has been established to help meet and solve the problems and challenges encountered by this large and rapidly expanding membership.

During the past year your Executive Committee endeavored to operate the GCAGS in an efficient and effective manner. As a result, I am pleased to report that the organization is in excellent financial condition. Our thanks to Bill Tucker and his Financial Committee for another year of expertly managing the Association's funds.

One of the most important functions of the GCAGS is the dissemination of technical and scientific papers on Gulf Coast geology. This function continues under the expert guidance of Robert Boyer and his Publication Committee.

Our Student Aid program, chaired by Ed Roy, has been well received. This year the program was expanded and research grants totaling \$10,000 were made available to fifteen geology majors attending universities located in the Gulf Coast area. Another excellent and timely project supported by the Association is the AAPG Tectonic Map Project, to which the GCAGS is contributing \$10,000 over a five-year period.

In summary, I thank the Executive Committee, our Past President Frank Harrison, Jr., and Regional AAPG Councilor M.O. Turner for their help and cooperation during the past year. Their counsel helped make my tenure as your president most enjoyable.

Paul M. Strunk  
President  
Gulf Coast Association of Geological Societies

## REPORT OF THE GENERAL CHAIRMAN THIRTY-FIRST ANNUAL MEETING — 1981



**Wilson Humphrey**

On behalf of the Corpus Christi Geological Society and the City of Corpus Christi, it is my pleasure to welcome you to this convention and to our fine city. Our people have been looking forward to your visit for many months.

About two years ago we began planning this meeting. Chairmen for the various committees were selected, and they started working immediately to make this a successful affair. Their efforts have been fruitful.

Our program co-chairmen and field trip chairman have assembled a technical program that we hope will leave you better informed. The technical program is complemented by an excellent group of exhibits for your further education.

Numerous entertainment events have been scheduled for your enjoyment. These include an icebreaker cocktail party; a dinner dance; and various ladies' activities, such as a hospitality room, a luncheon, a Mexico shopping tour, and a tour of the Rockport area.

We thank the many contributors and advertisers who have generously supported this meeting. It would not be possible to hold a GCAGS meeting without their assistance.

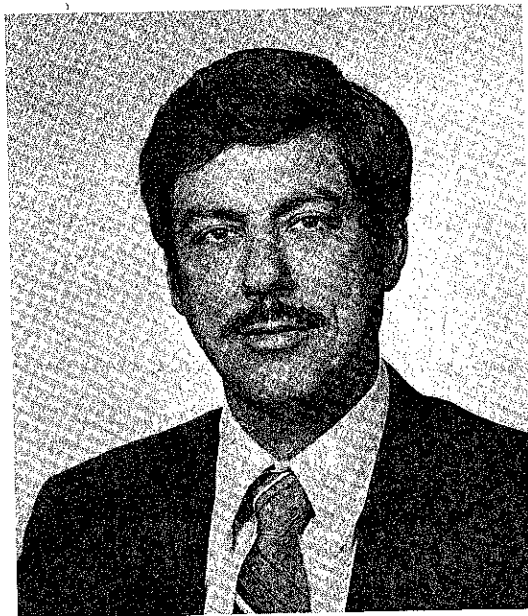
As you read your *Transactions*, please note the list of committee members who organized and worked long hours for this meeting. They are the people who have made this meeting a success. I am proud to have worked with such dedicated friends, and I thank them for their diligence.

We sincerely hope that this thirty-first meeting will be an enjoyable experience for you, and that we who planned and worked have made some contribution to our profession.

Wilson Humphrey  
General Chairman



## REPORT OF THE *TRANSACTIONS* EDITOR



Carlos M. Maggio

This year, as in the past three decades, some of the best papers on Gulf Coast geology have been published in the *Transactions*. Only by hard work of the authors and committee members was this possible. The *Transactions* is one of the few geological publications that gathers useful, practical, and exclusively Gulf Coast papers from a good blend of industry and academia. It is hoped that one or more papers will be useful to all who depend on the *Transactions*.

The spirit of involvement and cooperation among committees has been most gratifying. Messrs. Fred Thompson and Robert Valerius (GCAGS) and Arnold Bouma (GCS-SEPM) are to be commended for their successful soliciting of papers for the technical sessions. Special thanks are given to the Advertising, Printing, and Registration Committees. Appreciation is expressed to members of the Editorial Committee, who willingly agreed to serve on this time-consuming task. Special, sincere appreciation is given to my wife Dorothy, and to Jo Anne Russell, associate editors, who prevented the editor from becoming an ulcer statistic. Steven D. Meyers, 1980 *Transactions* Editor, is gratefully acknowledged; his advice and suggestions proved to be an invaluable help. The Golden Banner Press, especially Patsy del Bosque, provided appreciated advice, skillful work, and unlimited cooperation to produce a professionally printed *Transactions*.

Robert G. Loucks served as the capable editor of the GCS-SEPM manuscripts included in this volume. His cooperation from distant Tulsa is appreciated.

The GCAGS—GCS-SEPM is again indebted to H. O. Wyneken for this year's *Transaction* cover, which he designed and artistically prepared. Hank's talented art work enhances the covers of the 1964 and 1972 *Transactions*, the 1972 GCAGS Padre Island Guidebook, and many past Corpus Christi Geological Society Bulletins and Coastal Bend Geophysical Society Bulletins.

Acknowledgment is gratefully extended to Border Exploration Company for providing miscellaneous support in the form of long-distance telephone calls, mailing costs, editing supplies, reproduction services, and necessary secretarial support. Mrs. Mogie Dolan deserves special thanks for willingly doing much of the editorial typing, message taking, and mailing involved.

Lastly, but most importantly, the authors are sincerely thanked for preparing and submitting their papers. Perhaps the greatest benefit to the editor was the conversation and interchange held with many authors who, without exception, cooperated to the fullest within a short time frame. It is hoped that these associations and acquaintances will be lasting.

Carlos M. Maggio  
1981 *Transactions* Editor

# ORGANIZATION

## THIRTY-FIRST ANNUAL MEETING

*Wilson Humphrey — General Chairman; Border Exploration Company*  
*Thomas H. Fett — Vice-Chairman; Schlumberger*

### ADVERTISING COMMITTEE

Owen R. Hopkins, Sexton Oil & Minerals, Chairman  
James L. Claughton, Barranca Oil & Gas Corp.

### ARRANGEMENTS COMMITTEE

Steven A. Fall, Perryman & Murchison, Chairman  
Wayne S. Croft, Texas Oil & Gas Corp.  
Peter J. Hutchinson, Exxon Company, U.S.A.  
Thomas L. Jones, Jr., Independent  
Robert M. Rice, Edwin L. Cox & Berry R. Cox

### AUDIO-VISUAL COMMITTEE

James B. Brewster, Core Service, Inc., Co-Chairman  
John L. Oliver, Core Service, Inc., Co-Chairman

### AWARDS COMMITTEE

George K. Fegan, Moseley Petroleum, Chairman  
Ralf E. Andrews, Independent  
David B. Brock, Independent  
Donald L. Kling, Independent  
George Stanton, Independent

### CROSS COUNTRY RUN COMMITTEE

Daniel B. Linger, Forest Oil & Gas Corp., Chairman

### DISTINGUISHED VISITORS COMMITTEE

Clifford R. McTee, Independent, Chairman

### EDITORIAL COMMITTEE

Carlos M. Maggio, Border Exploration Co., Chairman  
Robert S. Barnard, Texas Oil & Gas Corp.  
Lynn Clark, Core Laboratories, Inc.  
James J. Deurmyer, Sparkman Energy  
William F. Eckert, Jr., Edwin L. Cox & Berry R. Cox  
H. Trygve Forsythe, Forest Oil & Gas Corp.  
Glenn C. Harrell, Independent  
John F. Wauters, Independent

### ENTERTAINMENT COMMITTEE

Leslie W. Giddens, Jr., Independent, Chairman

### EXHIBITS COMMITTEE

Phillip O. Gaston, Exxon Company, U.S.A., Co-Chairman  
Mary D. Kopczynski, Exxon Company, U.S.A., Co-Chairman  
Gerald B. Lee, Exxon Company, U.S.A., Co-Chairman

### FIELD TRIP COMMITTEE

Dr. John L. Russell, Texas A & I University, Chairman  
Dr. Jon A. Baskin, Texas A & I University  
Barbara E. Beynon, Transco Gas Pipeline Corp.  
James A. Knupke, Amerada Hess Corp.  
Gary L. Kuecker, Sullivan Exploration Co.

Debra A. Mittag, Natural Gas Pipeline Co. of America  
John L. Oliver, Core Services, Inc.  
Richard M. Parker, Border Exploration Co.  
Jo Anne Russell, Texas A & I University  
Robert W. Sullivan, Jr., Sullivan Exploration Co.  
Richard H. Womack, Consulting Geologist

### FINANCE COMMITTEE

William R. Payne, Independent, Chairman

### GOLF TOURNAMENT COMMITTEE

J. Don Haynes, Huffco Petroleum Division, Chairman  
Jack Barcklow, Independent  
G. M. Heinzelmann, Independent

### HOUSING COMMITTEE

Kinney E. Simon, Tierra Petroleum Corp., Chairman  
Lynn Clark, Core Laboratories, Inc.  
Alan T. Costello, Peninsula Resources Corp.  
Douglas N. Toepperwein, Forest Oil & Gas Corp.

### LADIES ACTIVITIES COMMITTEE

Mrs. Libby Ellison, Co-Chairman  
Mrs. Carolyn Humphrey, Co-Chairman  
Mrs. Frances Giddens, Artisan Boutique  
Mrs. Patricia Boyd, Champagne Brunch  
Mrs. Chris Hoover, Champagne Brunch  
Mrs. Joan Spradley, Champagne Brunch Entertainment  
Mrs. Mary Ruth Valerius, Favors Chairman  
Mrs. Teddi Dennis, Hospitality  
Mrs. Kay Rowling, Hospitality  
Mrs. Arlene Mengle, Hospitality-Bridge  
Mrs. Lorraine Reagan, Hospitality-Hostesses Chairman  
Mrs. Jean McCullough, Mexico Shopping Trip  
Mrs. Sara Vercellino, Mexico Shopping Trip  
Mrs. Betty Luker, On-Site Registration Chairman  
Mrs. Rozine Thompson, On-Site Registration Chairman  
Mrs. Mary Beth Maxwell, Packet Chairman  
Mrs. Sally Williams, Pre-Registration Chairman  
Mrs. Joanne Griesbach, Publicity Chairman  
Mrs. Judy Manka, Rockport Bus Trip  
Mrs. Carolyn Pedrotti, Rockport Bus Trip

### PRINTING COMMITTEE

Mark A. Wolbrink, Edwin L. Cox & Berry R. Cox, Chairman

### PROGRAM COMMITTEE

Fred M. Thompson, Jr., Onyx Exploration Co., Co-Chairman  
Robert D. Valerius, Onyx Exploration Co., Co-Chairman

### PUBLICITY COMMITTEE

Donald Orr, American Shoreline, Inc., Chairman  
James L. Bedford, Risa Energy Corp.

#### **REGISTRATION COMMITTEE**

Donnie F. Smith, Inexo Oil Co., Inc., Chairman  
Chris W. Douglas, Mike Hanson Minerals  
Frank A. Morrison, Jr., Border Exploration Co.  
Rickard R. Railsback, Inexo Oil Co., Inc.

#### **SEPM COMMITTEE**

Arnold H. Bouma, Gulf Research & Development Co., Program  
Bruce E. Gaither, Corpus Christi Oil & Gas Co., Representative  
Robert G. Loucks, Cities Service Research, Editor  
Michael J. Nault, ARCO Oil & Gas Co., Awards  
David R. Wells, American Shoreline, Inc., Representative

#### **TENNIS TOURNAMENT COMMITTEE**

Robert F. Travis, Royal Oil & Gas, Chairman

Leonard W. Howard, Howard Resources  
Jack G. Klatt, GoldKing Production Co.  
Janet Rice  
Peggy Travis

#### **TOBIN THEATRE COMMITTEE**

Mary Hewell, Petrosience Corp., Chairman  
Alan T. Costello, Peninsula Resources Corp.  
Tony Hauglun, McMoran Expl.

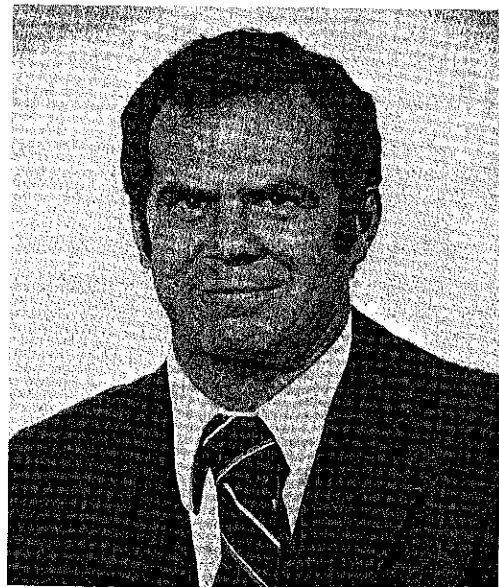
#### **TRANSPORTATION COMMITTEE**

Craig F. Anderson, Dinero Oil Co., Chairman  
William A. Heintz, Jr., Independent  
Steve Saylor, Mormac  
Charles M. Winston, Schlumberger

**GULF COAST ASSOCIATION OF GEOLOGICAL SOCIETIES  
BEST PAPER AWARDS, THIRTIETH ANNUAL MEETING  
LAFAYETTE, LOUISIANA**

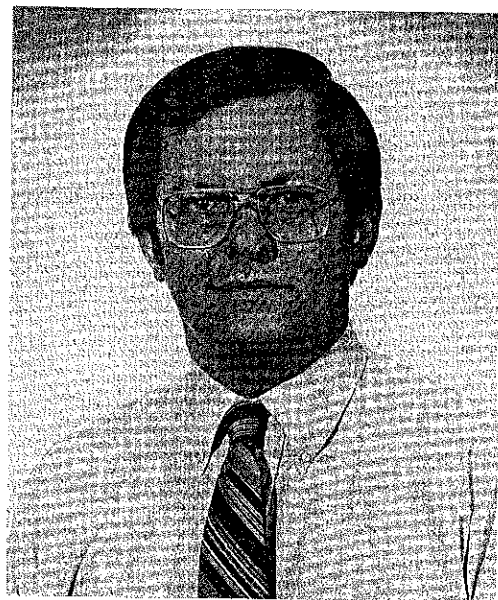
**THE FIRST PLACE** and the **A. I. Levorsen Memorial Award** were awarded to Ernest A. Mancini and D. Joe Benson for their paper entitled "Regional Stratigraphy Of Upper Jurassic Smackover Carbonates Of Southwest Alabama."

Ernest A. Mancini is a Gulf coastal plain stratigrapher specializing in biostratigraphy, paleoenvironments, and petroleum geology. He was educated at Albright College, Reading, Pennsylvania (B.S., Biology, 1969); Southern Illinois University (M.S., Zoology, 1972); and Texas A&M University (Ph.D., Geology, 1974). He was employed as an exploration geologist by Cities Service Oil Company from 1974 to 1976; his work stressed depositional environments and stratigraphy of Cretaceous and Tertiary sediments of the Alaska Peninsula and Bering Sea areas. Mancini joined the faculty of the Department of Geology and Geography at the University of Alabama in 1976 and became an Associate Professor in 1979. He teaches graduate courses in paleoecology, biostratigraphy, biogeology, micropaleontology, and petroleum geology. Mancini is listed in American Men and Women of Science and Who's Who in Technology Today; he is a member of Phi Kappa Phi, Sigma Xi, Phi Sigma, the Society of Economic Paleontologists and Mineralogists, the American Association of Petroleum Geologists, the Alabama Geological Society (Past President), and the Gulf Coast Section of the Society of Economic Paleontologists and Mineralogists.



Ernest A. Mancini

D. Joe Benson is a sedimentary petrologist and sedimentologist specializing in carbonate environments and diagenesis. He received his B.A. degree in Geology from the College of Wooster and his M.S. and Ph.D. degrees from the University of Cincinnati. He was employed as a research geologist by the Ohio Geological Survey from 1973 to 1978 and joined the Department of Geology and Geography at the University of Alabama in the fall of 1978. Benson teaches graduate-level courses in carbonate and clastic sedimentary petrology, sedimentology, and Recent carbonate environments of the Florida Keys. His research includes studies of depositional environments and diagenesis of Ordovician, Mississippian, and Jurassic carbonates; and Carboniferous clastics in Alabama, secondary porosity in sandstones, and porosity reduction due to ductile grain deformation in sandstones. Benson is a member of the Society of Economic Paleontologists and Mineralogists, the American Association of Petroleum Geologists, the Society of Sigma Xi, the Alabama Geological Society, and the Gulf Coast Section of the Society of Economic Paleontologists and Mineralogists.

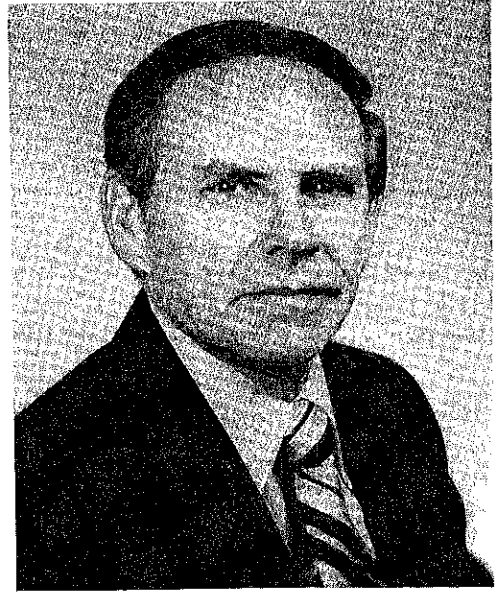


D. Joe Benson



**SECOND PLACE** was awarded to Frank W. Harrison, Jr., for his paper entitled "Louisiana Tuscaloosa Versus Southeast Texas Woodbine."

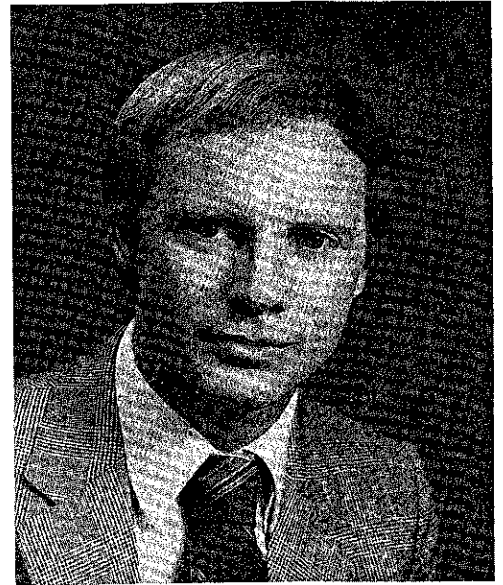
Frank W. Harrison, Jr., received his B.S. degree in Petroleum Geology from Louisiana State University in 1950. After two years of military duty in the U. S. Army, he returned to work in Louisiana and Mississippi for Union Producing Company, Seaboard Oil Company, Trans-Tex Drilling Company, and American Natural Gas Production Company. Since 1959, he has been in Lafayette as an Independent and Consulting Geologist. Harrison has been active in a number of local and national professional organizations throughout his career. He is the Past President of the Gulf Coast Association of Geological Societies and currently serves as President-Elect of the American Association of Petroleum Geologists.



Frank W. Harrison, Jr.

**THIRD PLACE** was awarded to Glen M. Gatenby for his paper entitled "Exploration Ramifications Of Subsurface Fluid Migrations In The Lake Borgne-Valentine Of Southeastern Louisiana."

Glen M. Gatenby was born in Toronto, Canada. He received his B.S. (1976) and M.S. (1979) degrees in Geology from Louisiana State University. He spent two years working for Union Oil of Canada, principally in the overthrust belt. In 1981, he transferred to Union Oil of California and is presently in Lafayette exploring in southwestern Louisiana. He is a member of the American Association of Petroleum Geologists and the Lafayette Geological Society.



Glen M. Gatenby

# CONSTITUTION AND BYLAWS

## GULF COAST ASSOCIATION OF GEOLOGICAL SOCIETIES

### ARTICLE I — Name

This is a non-profit organization and shall be known as the "Gulf Coast Association of Geological Societies." It is hereinafter referred to as "This Association."

### ARTICLE II — Object

The object of This Association is to provide for discussion and publication of papers on subjects and problems coming within the scope of the Geological profession and with particular emphasis on Gulf Coast geology.

### ARTICLE III — Organization

This Association is an organization of AAPG-affiliated Geological Societies in the Gulf Coast Area.

#### SECTION 1.

The business of This Association shall be transacted by an Executive Committee composed of one representative from each member society and the President, Vice-President, Secretary, Treasurer, and Past President. The Secretary and Treasurer shall be non-voting members of the Executive Committee. The Vice-President, Secretary, and Treasurer shall be elected by the Executive Committee at the annual meeting. The Secretary and Treasurer shall be nominated by the Executive Committee of the local Geological Society next in line to host the annual meeting. The Vice-President shall be nominated by the Executive Committee of the host society for the annual meeting two years hence and shall accede to the Presidency. Thus each year the President, Secretary and Treasurer will be from the host society with the Vice-President providing continuity with the Executive Committee as he assumes the Presidency in the ensuing year. The duties of these officers shall be those customary to their respective offices.

The GCAGS representative to the Advisory Council of the American Association of Petroleum Geologists shall be selected by the Executive Committee of GCAGS and shall be an ex officio, non-voting member of the GCAGS Executive Committee.

Each member society shall designate a representative to the Executive Committee and in the event the chosen representative cannot attend any given Executive Committee meeting, an alternate representative shall be appointed by the member society to attend and vote in the absence of the representative. The representative, when practicable, shall be an officer or past officer of the society he represents.

Each society shall have one vote on actions taken by the Executive Committee with the exception that the host society, the next annual host society and the immediate past host society will be entitled to two votes by virtue of their members holding the offices of President, Vice-President and Past President.

The officers of the Executive Committee shall be elected for a term of one year. They shall be elected and assume their duties as soon after the annual meeting of This Association as is practicable. Any vacancies shall be filled by the Executive Committee as provided above in Paragraph 1.

#### SECTION 2.

The business of This Association shall be conducted by the Executive Committee. A simple majority vote of the members present at meetings is required to effect decisions, except in those matters which require a greater majority, as set forth in the Constitution and Bylaws.

A quorum shall consist of more than one-half of the voting members of the Executive Committee.

### ARTICLE IV — Meetings

There shall be an annual meeting of This Association, the time and place of which shall be determined by the Executive Committee.

### ARTICLE V — Publications

There shall be an annual *Transactions* published by This Association, which shall contain papers presented at the annual meeting, and such other material as selected by the Executive Committee. The Executive Committee is authorized to have published additional bulletins, and other material which they feel will further the object of This Association.

### ARTICLE VI — Funds

The funds of This Association shall be deposited in any national bank or Federally insured Savings and Loan Association selected by the Finance Committee, to the credit of This Association, or invested in U. S. Government Bonds at the discretion of the Finance Committee.

## ARTICLE VII — Amendments

Amendments to this Constitutions may be proposed by the Executive Committee, or by any two member societies. Proposed amendments shall be submitted to each of the member societies in writing. It shall require an affirmative vote of three-fourths of the member societies to ratify an amendment to this Constitution.

## ARTICLE VIII — Later Affiliation

Non-member Geological Societies in the Gulf Coast Area which are affiliated with AAPG may petition the Executive Committee for membership and shall be accepted by an affirmative vote of three-fourths of the Executive Committee.

### AMENDMENT I

Any member society may resign from This Association at any time by written notice to the Executive Committee. There shall be no obligation to transfer to such resigning society any portion of This Association's funds.

### AMENDMENT II

This Association shall terminate at such time as a majority of the member societies shall so vote. Upon dissolution all funds and other property shall be divided equally among the member societies.

### BYLAWS

#### I. COMMITTEES:

The President, with the approval of the Executive Committee, shall appoint the Annual Meeting Chairman, and the following permanent committees:

- A. Publications
- B. Advertising
- C. Publicity

Appointment to these committees shall be for a term of one year.

##### 1. Annual Meeting Chairman

The Annual Meeting Chairman shall direct the staging of the annual meeting, and shall have the authority to appoint such additional committees as he deems necessary.

##### 2. Publications

The Publications Committee shall be responsible for obtaining papers for presentation at the annual meeting, and editing and publishing the annual *Transactions*. It shall endeavor to stimulate geologists in the Gulf Coast to prepare papers which can be collected and published in the *Transactions*, symposium or other form in order to further the object of This Association as set forth in Article II of the Constitution. This committee shall be composed of one member from each of the affiliated societies.

##### 3. Advertising

The Advertising Committee shall be responsible for obtaining advertisements in the publications of This Association, as directed by the Executive Committee. This committee shall be composed of one member from each of the member societies.

##### 4. Publicity

The Publicity Committee shall be responsible for obtaining maximum national and local publicity of the activities of This Association. Also it shall be the responsibility of this committee to stimulate interest and participation in association affairs. The Executive Committee shall function as the Publicity Committee.

The President, with the approval of the Executive Committee, may appoint such additional committees as are necessary to conduct the business of This Association.

#### II. TREASURER:

The Treasurer shall have the authority to issue checks against the Annual Meeting bank account of This Association on his sole signature, but in the event of his absence or incapacity to act, withdrawals or payments by checks may be made on the signature of the President during the continuance of the absence, or incapacity, of the Treasurer. In this event, the identity and authority of the President, and the circumstances relating to the absence or incapacity of the Treasurer shall be certified by the Executive Committee, if so required by the depository. The Treasurer shall submit a financial report on the Annual Meeting at each meeting of the Executive Committee and shall keep a set of books in accordance with good accounting practices. He shall submit the books of the Annual Meeting to the Finance Committee by March 1st following the Annual Meeting. The office of Treasurer shall be bonded as directed by the Executive Committee.

III. FINANCE COMMITTEE:

The Finance Committee shall be responsible for investing and managing the funds of the Association. They shall be responsible for advancing to the Treasurer the necessary funds for operating the Annual Meeting and shall disburse funds for expenses and projects not related to the Annual Meeting as directed by the President upon approval by the Executive Committee. The Committee shall have authority to invest the funds as outlined in Article VI. They shall prepare a financial report on the Association's funds and submit it each meeting of the Executive Committee. They shall also keep an inventory and storage record of publications and equipment owned by the Association. They will keep a set of books in accordance with good accounting practices and will submit the books for auditing as requested by the Executive Committee. The Committee will oversee the preparation and submittal of the Association's Annual Income Tax Return. The Committee will also keep a file of these financial reports, as well as the report of the Treasurer for each Annual Meeting, for access by officers and representatives of the annual meetings of future years. The Committee shall consist of three members serving staggered three-year terms, such that each year one member will complete his term and a new member will be appointed in his place. The President of the Association, with the approval of the Executive Committee, shall appoint the members of the Finance Committee and they shall elect their own Chairman. Members of the Finance Committee shall be bonded as directed by the Executive Committee.

IV. These Bylaws may be amended by an affirmative vote of three-fourths of the Executive Committee.

V. There shall be no dues.



## GULF COAST ASSOCIATION OF GEOLOGICAL SOCIETIES PAST OFFICERS AND CONVENTION CHAIRMEN

YEAR	HOST SOCIETY	PRESIDENT	VICE-PRESIDENT	SECRETARY	TREASURER	CONVENTION CHAIRMAN
1951	New Orleans	L. Bowling				
1952	Corpus Christi	W. M. Chaddick	W. A. Gorman		E. M. Baysinger	
1953	Shreveport	R. T. Wade	D. D. Utterback	J. S. Spencer	T. D. Barber	W. J. Nugent
1954	Houston	W. R. Canada	W. H. Knight	W. A. Peterson	E. W. Kimball	
1955	Biloxi	A. E. Blanton	L. L. Traupe	F. H. Webster	C. C. Barber	R. D. Sprague
1956	San Antonio	R. L. Layden	M. W. Beckman	C. W. Holcomb	A. F. Scott	G. J. Joyce
1957	New Orleans	H. N. Hickey	P. Montgomery	R. A. Davis	K. C. Anderson	T. H. Philpott
1958	Corpus Christi	E. A. Lohse	R. W. Grayson	E. T. Musselman	W. H. Wallace, Jr.	R. C. Wilshusch
1959	Houston	G. C. Hardin, Jr.	L. Harvey	J. F. Moss	J. A. Wheller	O. G. Bell
1960	Biloxi	M. F. Kirby	D. N. Osburn	W. W. Woolfolk	E. G. Jeffreys	A. E. Blanton
1961	San Antonio	D. Dassow	E. P. Roth	A. W. Wood	E. L. Ames	L. L. Palmer
1962	New Orleans	T. H. Philpott	J. C. Byrd	H. O. Woodbury	K. Soule	L. H. Meltzer
1963	Shreveport	J. C. Byrd	E. Knott	W. E. Bancroft	R. E. Rogers	H. J. Tyler
1964	Corpus Christi	E. Knott	R. E. Fairchild	R. W. Luker	D. A. Pedrotti	B. F. Dyer
1965	Houston	R. E. Fairchild	A. M. Borland	K. C. Harkins, Jr.	J. L. George, Jr.	E. A. Lohse
1966	Lafayette	A. M. Borland	J. H. Hensley	W. A. Robbins, Jr.	J. S. Schoelen	R. R. Copeland
1967	San Antonio	W. L. Stapp	M. D. Horton	M. L. Frazier, Sr.	L. C. Bryant	M. O. Turner
1968	Jackson	M. D. Horton	R. O. Vernon	L. G. Hughes	E. D. Minihan	L. E. Warren
1969	Miami	R. O. Vernon	H. J. Tyler	J. W. Yon, Jr.	C. W. Hendry, Jr.	H. S. Puri
1970	Shreveport	H. J. Tyler	L. H. Meltzer	C. E. Brown	B. C. Tucker	J. O. Goffe
1971	New Orleans	L. H. Meltzer	D. R. Boyd	M. L. Dwight	P. G. Gray	R. G. Williamson
1972	Corpus Christi	D. R. Boyd	F. M. Schall, Jr.	M. H. Oakes	J. E. Melfton	J. M. Sides
1973	Houston	F. M. Schall, Jr.	S. J. Lysinger	M. E. Hole, Jr.	P. W. Cawthon, Jr.	C. E. Harrison
1974	Lafayette	S. J. Lysinger	W. H. Moore	T. J. Eby, Jr.	J. J. Bellamy	F. W. Harrison, Jr.
1975	Jackson	W. H. Moore	C. L. Sartor	W. E. Taylor	H. L. Ladner	C. H. Williams, Jr.
1976	Shreveport	C. L. Sartor	R. E. Boyer	J. T. Palmer	C. E. Brown	L. E. Jordan
1977	Austin	R. E. Boyer	P. G. Gray	A. E. Bell	F. L. Osborne, Jr.	E. G. Wermund, Jr.
1978	New Orleans	R. W. Stephens	E. C. Roy, Jr.	R. M. Swords	C. J. Corona	Jules Braunstein
1979	San Antonio	E. C. Roy, Jr.	F. W. Harrison, Jr.	S. L. Perkins	L. C. Bryant	George His
1980	Lafayette	F. W. Harrison, Jr.	P. M. Strunk	J. W. Shirley	R. A. Anderson	M. A. Munchrath
1981	Corpus Christi	P. M. Strunk	J. J. Amoruso	T. J. Wintermute	W. R. Payne	Wilson Humphrey

**HONORARY MEMBER  
GULF COAST SECTION  
SOCIETY OF ECONOMIC PALEONTOLOGISTS AND MINERALOGISTS**



**Frank E. Lozo, Jr.**

Frank Lozo dedicated his professional career to stratigraphic studies of the Texas Lower Cretaceous. His contributions to the literature on the Lower Cretaceous are fundamental references for all subsequent workers. However, his most important contributions may lie, not in publications but, in the fact that through dedication and determination he stimulated and provided the opportunity for numerous young geologists to participate in the endeavor with him. That the combined efforts of all those has provided a regional stratigraphic framework for the Texas Lower Cretaceous of unparalleled detail and accuracy can be directly attributed to Frank Lozo.

Frank E. Lozo Jr. was born and raised in Fort Worth, Texas, on the Washita outcrop. He attended Texas Christian University and received his bachelor's degree in chemistry in 1935. He received a master's degree in geology from T.C.U. in 1937 and the doctorate from Princeton in 1941. From 1939 to 1944 he taught geology at T.C.U., first as an instructor while completing his Ph.D. and later as an Assistant Professor. Through the same period he was employed most summers by either Gulf or Shell oil companies as a micropaleontologist. In 1944 he accepted a full-time position with Shell as Senior Geologist and then, in 1948, transferred to Shell Development Company as a Research Associate, remaining there until his retirement in 1971.

Frank was a student, friend, and colleague of such outstanding early Texas geologists as W.M. Winton, Gayle Scott, W.S. Adkins, H. B. Stenzel, Helen Jeanne Plummer, John R. Sandidge, and R. T. Hazzard. He developed a deep appreciation for the quality of their work and dedication and became a student on the history of Cretaceous investigations in Texas. He maintains that, if anything, his work represents an extension and development of ideas and investigations begun by those who came before. For example, he revived, extended, and promoted R. T. Hill's original concept of Stratigraphic Divisions (regional lithogenetic unconformity bounded units), so that these units are now used routinely by Texas Cretaceous stratigraphers.

In the fifties, Frank became involved with activities of the AAPG and served on the Research Committee (1954-56), Geologic Names and Correlation Committee (1955-56), Technical Programs Committee (1958), and was a member of the American Commission on Stratigraphic Nomenclature from 1959 to 1962. During this period he also edited and was a contributing author to the symposium on "The Woodbine and Adjacent Strata of the Waco Area of Central Texas" (1951), and contributed to the "Symposium on the Edwards Limestone in Central Texas" (1959). He is a charter member of the Gulf Coast Section of SEPM.

Prior to joining Shell in 1944, Frank directed much of his research effort to foraminifera biostratigraphic studies. Later, after joining Shell Development Company, he set up a project to study broader aspects of Lower Cretaceous geology, and for the next 23 years he and his co-workers studied the Lower Cretaceous intensively from southern Oklahoma to Trans-Pecos, Texas, and into northern Mexico. In addition to refining the stratigraphy, these studies provided ancient carbonate rock analogs for comparison with modern studies carried out at that time by R.N. Ginsburg and associates in Florida and the Bahamas. Shell Training Division still uses these studies in their classes on carbonates.

Since retirement, Frank has been able to pursue his long-term avocation of genealogy and devote much time to his hobby of restoring classic cars. He still follows and will continue to follow and encourage studies of the Lower Cretaceous. Those of us who owe him so much will continue to extend his ideas and investigations, mindful of the foundation upon which we build.

C.I. Smith

# GULF COAST SECTION SOCIETY OF ECONOMIC PALEONTOLOGISTS AND MINERALOGISTS

## OFFICERS

President: Bob F. Perkins, Department of Geology, The University of Texas at Arlington, Arlington, Texas 76019  
President-Elect: William P. S. Ventress, Chevron U.S.A. Inc., 1111 Tulane Avenue, New Orleans, Louisiana 70112  
Vice-President: Don G. Bebout, Louisiana Geological Survey, University Station, Box G, Baton Rouge, Louisiana 70893  
Secretary: Sheila C. Barnette, Sohio Petroleum Company, 8303 Southwest Freeway, Houston, Texas 77074  
Treasurer: Ted Karmen, Amoco Production Company, P. O. Box 50879, New Orleans, Louisiana 70150  
Past President: Gene B. Martin, ARCO Oil and Gas Company, P. O. Box 1346, Houston, Texas 77001

## 1981 ANNUAL CONVENTION COMMITTEE

Program Chairman: Arnold H. Bouma, Gulf Research & Development Company, Drawer 2038, Pittsburgh, Pennsylvania 15230  
Editor: Robert G. Loucks, Cities Service Company, Box 50408, Tulsa, Oklahoma 74150  
Representatives: Bruce E. Gaither, Corpus Christi Oil & Gas Corp., P. O. Box 779, Corpus Christi, Texas 78403  
David R. Wells, American Shoreline, 1108 Guaranty Bank Tower, Corpus Christi, Texas 78474  
Awards Chairman: Michael J. Nault, ARCO Oil and Gas Company, P. O. Box 51408, Lafayette, Louisiana 70505

## BUSINESS REPRESENTATIVES

### ALABAMA

Janyth S. Tolson, Geological Survey of Alabama, P.O. Drawer O, University, Alabama 35486

### FLORIDA

Richard A. Davis, Jr., Department of Geology, University of South Florida, Tampa, Florida 33614

### LOUISIANA

Baton Rouge Area: David E. Pope, Louisiana Geological Survey, University Station, Box G, Baton Rouge, Louisiana 70893  
Lafayette Area: David Reimers, Department of Geology, University of Southwestern Louisiana, Lafayette, Louisiana 70504  
New Orleans Area: Scott R. Byrum, Samedan Oil Corp., Suite 1400, Saratoga Building, 200 Loyola Ave., New Orleans, Louisiana 70112  
Shreveport Area: Nolan G. Shaw, Department of Geology, Centenary College of Louisiana, P. O. Box 4188, Shreveport, Louisiana 71104

### MISSISSIPPI

Ernest E. Russell, Department of Geology and Geography, Mississippi State University, Mississippi 38762

### TEXAS

Austin Area: Robert S. Kier, Camp, Dresser & McKee Inc., 3445 Executive Center Drive, Suite 220, Austin, Texas 78731  
Dallas-Fort Worth Area: Charles L. McNulty, Department of Geology, The University of Texas at Arlington, P. O. Box 19049, Arlington, Texas 76019  
East Texas Area: Mark W. Presley, Delta Drilling Company, P. O. Box 9050, Tyler, Texas 75711  
Houston Area: Jim Bain, Gulf Research and Development Company, P. O. Box 36506, Houston, Texas 77036  
San Antonio Area: Edward C. Roy, Jr., Department of Geology, Trinity University, 715 Stadium Drive, San Antonio, Texas 78284

## FIELD TRIP COMMITTEE

Chairman: Don G. Bebout, Louisiana Geological Survey, University Station, Box G, Baton Rouge, Louisiana 70893  
Field Trip Leaders: Robert A. Morton, Bureau of Economic Geology, The University of Texas at Austin, Austin, Texas 78712  
Dag Nummedal, Department of Geology, Louisiana State University, Baton Rouge, Louisiana 70893

## FIRST ANNUAL RESEARCH CONFERENCE COMMITTEE

Gene B. Martin, Co-Chairman, ARCO Oil and Gas Company, Houston, Texas  
Bob F. Perkins, Co-Chairman, The University of Texas at Arlington, Arlington, Texas  
Jim Bain, Gulf Research and Development Co., Houston, Texas  
Don G. Bebout, Louisiana Geological Survey, Baton Rouge, Louisiana  
John L. Carney, Amoco Production Company, New Orleans, Louisiana  
James L. Lamb, Exxon Production Research Co., Houston, Texas  
R. A. Morton, Bureau of Economic Geology, Austin, Texas  
Edward B. Picou, Shell Oil Company, New Orleans, Louisiana  
Mary Ann Raffle, Shell Oil Company, Houston, Texas  
Ernest E. Russell, Department of Geology and Geography, Mississippi State University, Mississippi  
Arthur S. Waterman, Paleo-Data Inc., New Orleans, Louisiana

## HONORARY MEMBERS

Harold V. Andersen  
Jules Braunstein  
Doris M. Curtis

Hedwig T. Kniker  
Stuart A. Levinson  
Frank E. Lozo, Jr.

Grover E. Murray  
William R. Paine  
John R. Sandidge

Fred L. Smith, Jr.  
Charles W. Stuckey  
Lyman D. Toulmin

**REPORT OF THE PRESIDENT  
GULF COAST SECTION  
SOCIETY OF ECONOMIC PALEONTOLOGISTS AND MINERALOGISTS  
1981**



**Bob F. Perkins**

The Gulf Coast Section of the Society of Economic Paleontologists and Mineralogists was established over 25 years ago for the purpose of promoting "the science of stratigraphy in the Gulf Coast states through research in paleontology and sedimentary petrology, especially as it relates to petroleum geology." Since its inception in 1953, the GCS-SEPM has fostered the science of stratigraphy in the Gulf Coast region through sponsorship of field trips, annual professional meetings in cooperation with the Gulf Coast Association of Geological Societies, and publication of field guides and special research reports. As the search for oil and gas intensifies during the 80's, the value of stratigraphic research will be increasingly amplified and the role of the GCS-SEPM, in the promotion of the substantive stratigraphic research essential to successful exploration efforts throughout the Gulf Coast region, should be efficiently and effectively organized and supported for the benefit of the profession, the petroleum industry, and the regional and national economy.

Two important events of the past year herald the beginning of an increased level of support of research activities by the GCS-SEPM: the initiation of the Annual Research Conference series and the establishment of the GCS-SEPM Foundation. These two events constitute an ambitious renewal of the Section's commitment to the encouragement of the exchange of information and ideas and to the stimulation and support of research in Gulf Coast stratigraphy.

Gene B. Martin conceived the idea of a GCS-SEPM-sponsored research conference, and under his leadership the First Annual Research Conference, entitled the *Geology of the Woodbine and Tuscaloosa Formations*, was held in Houston in December, 1980. Eighteen very excellent papers and two core workshops were presented at the conference, and participation was fully subscribed with over 300 registrants. Marc B. Edwards and the Second Annual Research Conference Program Advisory Committee, of which he is chairman, have planned an equally informative and stimulating program of papers and workshops dealing with the *Recognition of Shallow-Water versus Deep-Water Sedimentary Facies in Growth-Structure-Affected Formations of the Gulf Coast Basin* for the second research conference to be held in Dallas November 29 through December 2, 1981. The GCS-SEPM Annual Research Conference series has been generously and extensively supported by individuals and industry.

The GCS-SEPM Foundation was established in 1981 as a trust for the sponsorship of research and research-related activities, including research grants, seminars, conferences, symposia, publications, and programs of continuing education in stratigraphy and the related sciences of paleontology and sedimentary petrology. The GCS-SEPM Foundation will provide for all these activities tax-exempt sponsorship and other research funding opportunities on a scale not available to the Section itself.

I wish to express my appreciation to all the Section officers, to Arnold Bouma and other members of the 1981 Convention Committee, to the members of the Field Trip Committee, to the Business Representatives, and to the members of the First and Second Annual Research Conference Committees for their outstanding efforts toward making this past year such a fruitful and significant period for the Section.

I am especially grateful to the members of the GCS-SEPM for extending to me the opportunity to serve as Section President. The very cooperative attitude of the members and the spirit of accomplishment for the benefit of the Section and the profession that I have encountered at every turn have been exceptionally rewarding. Thank you for the honor of having elected me to the office of President.

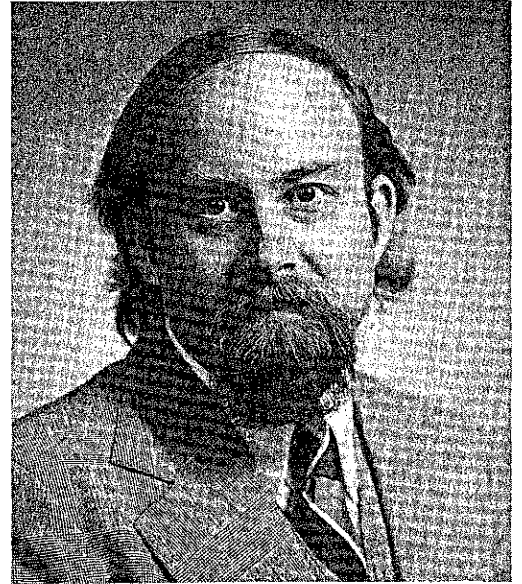
Bob F. Perkins  
President GCS-SEPM



**GULF COAST SECTION  
SOCIETY OF ECONOMIC  
PALEONTOLOGISTS AND MINERALOGISTS  
BEST PAPER AWARDS, TWENTY-SEVENTH ANNUAL MEETING,  
LAFAYETTE, LOUISIANA**

**FIRST PLACE** was awarded to Arthur W. Cleaves for his paper entitled "Depositional Systems And Lignite Prospecting Models: Wilcox Group And Meridian Sandstone Of Northern Mississippi."

Arthur W. Cleaves received his B.S. degree in Geology from Brown University in 1967 and his graduate degrees from the University of Texas at Austin in 1971 and 1975. He has been employed as a Research Scientist Associate with the Texas Bureau of Economic Geology (1976) and as an Assistant Professor of Geology at Wayne State University (1975) and the University of Mississippi (1976-1979). He is presently a Research Assistant Professor with the Mississippi Mineral Resources Institute. Cleaves is a member of the American Association of Petroleum Geologists, the Geological Society of America, the Society of Economic Paleontologists and Mineralogists, the Mississippi Geological Society, and the Association for the Advancement of Science. His current research projects include: 1) an assessment of Wilcox-Meridian depositional systems and lignite resources in Mississippi, Alabama, and Tennessee; and 2) regional stratigraphy of Carboniferous rock units in the Black Warrior Basin.



Arthur W. Cleaves

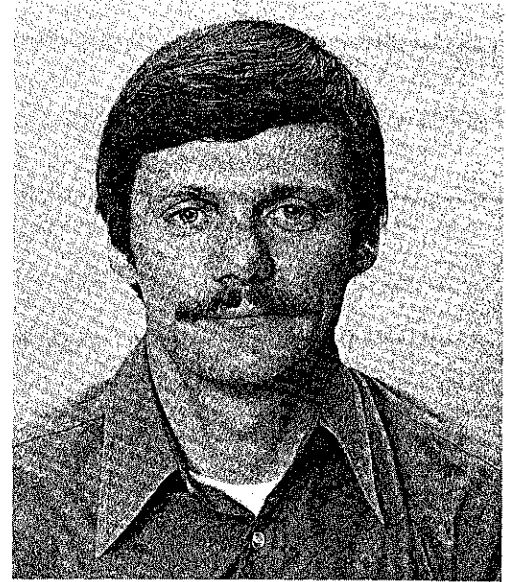
**SECOND PLACE** was awarded to Ivor L. van Heerden and Harry H. Roberts for their paper entitled "The Atchafalaya Delta - Louisiana's New Prograding Coast."

Ivor Llewellyn van Heerden completed his military service in 1969 with the Corps of Engineers, South African Defence Force, where he trained as a land surveyor. He received his B.S. degree in Geology in 1975, and in 1976 he obtained his B.S. Honours degree in Sedimentary Geology. Both degrees were awarded at the University of Natal, Pietermaritzburg, South Africa. Graduate studies were started at Louisiana State University in 1977, and in 1980 he obtained his M.S. degree for work in the Atchafalaya Delta. Currently, he is involved in a Ph.D. program in the Department of Marine Sciences at Louisiana State University. The dissertation is an extension of his Masters' work in the Atchafalaya Delta. His graduate studies are supported partially by funding from the Ernest Oppenheimer Memorial Trust Fund, Johannesburg, South Africa. Other coastal interests include beach, estuarine, and nearshore dynamics and sedimentation. An extension of these interests is the interpretation of similar environments as they are preserved in the geological record.



Ivor L. van Heerden

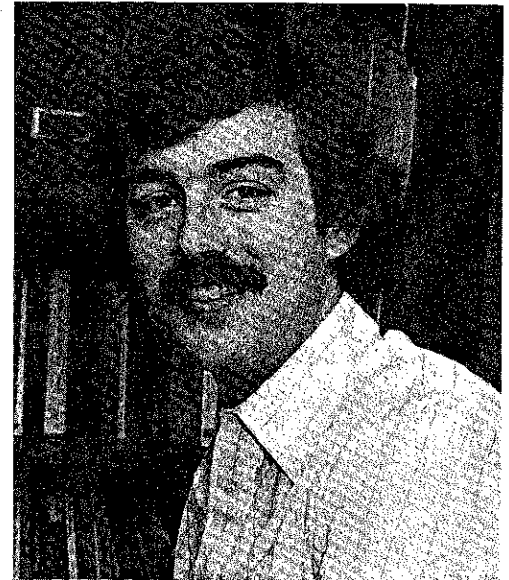
Harry H. Roberts received his B.S. degree in Physics (1963) from Marshall University in Huntington, West Virginia, and M.S. (1966) and Ph.D. (1969) degrees in Geology from Louisiana State University. He joined the Coastal Studies Institute in 1968 and advanced to the rank of Professor in 1978. Since 1968, he has been formulating and conducting field-oriented research projects in carbonate and terrigenous settings. These studies relate to a wide variety of coastal and shelf problems, including physical processes, sedimentation, and geomorphology. Field investigations have been conducted domestically and along a variety of foreign coasts, including Grand Cayman, Barbados, Nicaragua, Brazil, Oman, Egypt, and St. Croix. In addition, he has been active as a consultant to the oil industry on problems of geological hazards, sedimentation, and high-resolution geophysical data interpretation. He has worked for engineering firms and consulting agencies on problems of coastal sedimentation and sediment stability. Commonly, in conjunction with other members of the Coastal Studies Institute, he has taught applied geology short courses on deltas and carbonate environments. Roberts has authored or co-authored more than fifty professional papers and technical reports on basic and applied coastal geoscience. He has presented a number of invited lectures domestically and in foreign countries.



Harry H. Roberts

**THIRD PLACE** was awarded to Thor A. Hansen for his paper entitled "The Biostratigraphic Significance Of Fossil Molluskan Larvae."

Thor A. Hansen received his B.S. degree in Geology from George Washington University in 1974 and his Ph.D. in Geology from Yale University in 1978. Since 1978, he has been an Assistant Professor at the University of Texas at Austin and Associate Curator of Cenozoic Marine Invertebrates at the Texas Memorial Museum. He teaches courses in historical geology, stratigraphy, paleoecology, and a six-week-summer field course. His research interests center on the Tertiary stratigraphy and paleontology of the Gulf Coast with special emphasis on the evolutionary patterns and paleoecology of molluscs.



Thor A. Hansen

**BYLAWS  
OF  
GULF COAST SECTION OF  
THE SOCIETY OF ECONOMIC  
PALEONTOLOGISTS AND MINERALOGISTS**

**ARTICLE 1.**

**OBJECT**

1.01 The object of the Gulf Coast Section of the Society of Economic Paleontologists and Mineralogists is to promote the science of stratigraphy in the Gulf Coast states through research in paleontology and sedimentary petrology, especially as it relates to petroleum geology. The Corporation, herein referred to as the "Section", will be closely associated with the Gulf Coast Association of Geological Societies and will cooperate with it and with the local geological societies of which it is composed for the furtherance of mutual objectives.

**ARTICLE 2.**

**MEMBERS**

2.01 The Section shall have members, associate members, charter members, and honorary members.

2.02 Members shall be persons engaged in paleontologic, petrographic or stratigraphic studies that have application to the geology of petroleum who are members or associate members of the Society of Economic Paleontologists and Mineralogists and who work or reside in the Gulf Coast province of the states of Texas, Louisiana, Mississippi, Alabama, Georgia, or Florida, or whose interest or work is principally within these states. Membership, once obtained, shall not be dependent upon continued residence in the aforementioned states.

2.03 Associate members shall be persons engaged in paleontologic, petrographic or stratigraphic studies that have application to the geology of petroleum, who work or reside in the Gulf Coast province of the above mentioned states, and who are not members or associate members of the Society of Economic Paleontologists and Mineralogists. Associates shall enjoy all the privileges of membership, save that they shall not hold office. Election to membership in the Society of Economic Paleontologists and Mineralogists will automatically advance associates to members.

2.04 Charter members are those whose applications for membership were received before the first nomination of officers. They shall enjoy all the privileges of members and, hereinafter, are included in all references to "members."

2.05 The Council may elect as honorary members persons who have contributed distinguished service to the science of stratigraphy, paleontology or sedimentary petrology, especially as they relate to petroleum geology in the Gulf Coast. Honorary members shall not be required to pay dues.

2.06 Each candidate for membership shall submit to the Secretary an application on a form authorized by the Council for this purpose.

2.07 New members and associates enrolled after September 15 shall be considered as having paid their dues for the next calendar year.

**ARTICLE 3.**

**COUNCIL AND OFFICERS**

3.01 Executive authority of the corporation is vested in a board of directors known as the "Council" consisting of six members who are officers duly elected by the members, as follows: President, President-Elect, Vice-President, Secretary, Treasurer, and the most recently retired Past President.

3.02 The President shall discharge the usual duties of a president, as well as act as presiding officer at all meetings of the Section and Council. He shall appoint an Editor, Program Chairman, Committee Chairmen and Business Representatives.

3.03 The Vice-President shall assume the duties of the President in the case of the absence or disability of the latter. He shall also be Chairman of the Membership Committee and Chairman of the Employment Counseling Committee.

3.04 The Secretary shall keep records of the proceedings of the Section and a complete list of the membership. He shall attend to the preparation and mailing of notices, membership application blanks and other materials necessary to the business of the Section.

3.05 The Treasurer shall have custody of all funds of the Section. He shall keep account of the receipts and disbursements, and submit his account to the membership at the end of each year.

3.06 The Council shall consider all candidates for membership and pass on the qualifications of the applicants; shall have control and management of the affairs and funds of the Section; shall designate the time and place of the Annual Meeting.

3.07 The President and Vice-President shall not serve for more than one (1) year, except that if the Vice-President succeeds to the position of acting President, he may be elected to a full term as President.

3.08 In the event that neither the President nor Vice-President is available to serve as presiding officer of the Section, the immediate Past President shall assume the President's duties.

3.09 The President-Elect shall serve for one (1) year as such, and in the following year he shall assume the office of President. He shall have no administrative authority except as a member of the Council. He shall acquaint himself with all the details of the office of President and generally prepare himself to serve as President. He shall be responsible for the preparation of the annual meeting for the ensuing year.

3.10 A vacancy occurring in the offices of Vice-President, Secretary or Treasurer shall be filled by Council appointment.

3.11 A vacancy occurring in the office of President-Elect shall be filled by mail ballot by the membership through a special election called by the Council.

#### ARTICLE 4.

##### MEETINGS OF MEMBERS

4.01 The Section shall hold at least one stated meeting each year, which shall be known as the Annual Meeting. This meeting will usually be held in conjunction with the Annual Meeting of the Gulf Coast Association of Geological Societies.

4.02 The program for the Annual Meeting shall be arranged by the Program Chairman in conjunction with the Chairman designated by the Gulf Coast Association of Geological Societies to arrange for its own program. In general, it will be desirable that the contributions from members of the Section be included in the main program rather than being allotted to a separate session.

4.03 At the time of the Annual Meeting, a Business Meeting shall be held for the transaction of Section business.

#### ARTICLE 5.

##### AMENDMENT OF BYLAWS

5.01 These Bylaws may be amended by a two-thirds vote of returned mail ballots received by the Secretary sixty (60) days after proposal of amendments with provision for vote is mailed to the members. Any proposed amendments must have the approval of a majority of the Council before being submitted to the members.

5.02 A petition containing the signatures of twenty (20) active members is considered sufficient to bring before the Council a proposed change in the Bylaws. A majority vote of the Council is also considered sufficient to initiate a proposed change.

#### ARTICLE 6.

##### DUES

6.01 The fiscal year of the Section shall commence on October 1 and expire on September 30 of the following year.

6.02 The annual dues of the members and associates of the Section shall be four dollars (\$4.00). Penalty of fifty cents (.50) shall be assessed for late payments of dues. The fifty cents (.50) late penalty shall be waived upon payment of dues for two or more years.

6.03 A bill for dues shall be mailed to each member and associate before January 1 of each year. Members and Associates who have not paid their annual dues by April 1 shall be dropped from the membership rolls.

6.04 Members and Associates dropped for non-payment of dues may apply to the Council for reinstatement and be reinstated by majority vote of the Council.

6.05 Members or Associates may, at their discretion, pay their annual dues in advance for periods of up to five (5) years.

#### ARTICLE 7.

##### FINANCIAL PROCEDURE

7.01 No officer or member shall enter into any contract or disburse any of the Section's funds without the co-signature of a member of the Council. Disbursal of a sum in excess of Five Hundred Dollars (\$500.00) must be approved by a majority of the Council.

#### ARTICLE 8.

##### ELECTIONS

8.01 The President shall appoint two (2) nominating committees, instructing each committee to submit nominations for President-Elect, Vice-President, Secretary, and Treasurer. These nominations shall be in the Secretary's hands before July 15. If desired, the same person may be nominated by the two committees for the offices of Secretary and Treasurer, but the nominations of the first committee to file its report will have precedence in case of overlapping nominations, and the other committee shall then be requested to change its nomination. A candidate for office must be an active member and reside in the Gulf Coast at the time of his nomination.

8.02 Ballots containing the nominations for officers, arranged alphabetically under each office, shall be prepared by the Secretary and mailed to each member of the Section on or before July 15. The ballots received by the secretary before September 15 shall be counted by him. Receipt of a plurality of the votes cast for any office shall constitute election. In case of a tie vote, members of the Council shall cast one additional deciding vote.

8.03 Results of balloting shall be announced at the Annual Meeting, and the new officers shall enter upon duty at the adjournment of the Meeting.

ARTICLE 9.  
PUBLICATIONS

9.01 The Section editor, appointed by the President, shall actively solicit papers from the Section membership for presentation at the Annual Meeting. He shall cooperate with the editor of the Gulf Coast Association of Geological Societies' annual TRANSACTIONS volume in preparing papers delivered at the meeting for publication in this volume. He shall cooperate with the editors of the Society of Economic Paleontologists and Mineralogists' journals by helping to arrange for publication in these periodicals of suitable papers which come to his attention.

9.02 Members of the section may purchase one copy of each Section publication at a discount of 20 percent off the advertised price.

ARTICLE 10.  
BUSINESS REPRESENTATIVES

10.01 The President shall appoint one representative from each group of members in each local geological society affiliated with the Gulf Coast Association of Geological Societies and in other localities as needed. Each representative shall have an up-to-date list of the members residing in his vicinity. He will notify these members concerning any matters of Section policy which may be relayed to him by the President and shall have the authority to convene a meeting of these members to determine their views concerning Section affairs. He will report the results of such meetings to the President of the Section. He will cooperate with the Section editor in the soliciting of papers to be presented at the Annual Meeting and with the Chairman of the Membership Committee in recruiting new members for the Section.

ARTICLE 11.  
AUDIT

11.01 The President shall appoint an Auditing Committee which shall review the accounts presented by Treasurer. The approval of the Treasurer's books by this committee shall be required before his final report will be accepted. The Treasurer may submit a provisional report at the Annual Meeting, and his final audit shall be accomplished not later than 30 days thereafter.

The Constitution of the GCS-SEPM was originally adopted  
in 1954 and was amended in 1960, 1962, 1966,  
1969, 1971, 1972, 1975, and 1981.  
The Section was incorporated under the laws of the State of Texas  
in 1981, and these Bylaws were adopted at that time in place  
of the original Constitution and its amendments.  
These Bylaws embody all of the provisions of the original  
Constitution and its amendments.

## GULF COAST SECTION — SEPM PAST OFFICERS

	PRESIDENT	VICE-PRESIDENT	SECRETARY	TREASURER
1953-1954	Stuart A. Levinson	Grover E. Murray	William H. Akers	Frank V. Stevensen
1954-1955	Charles W. Stuckey, Jr.	E. H. Rainwater	William H. Akers	Fred L. Smith, Jr.
1955-1956	E. H. Rainwater	Frank S. Westmoreland	Hugh A. Bernard	Eleanor T. Caldwell
1956-1957	Lloyd M. Pyeatt	J. O. Colle	H. Dillingham, Jr.	Eleanor T. Caldwell
1957-1958	J. O. Colle	Fred L. Smith, Jr.	Harold V. Andersen	William G. Parker
1958-1959	Marcus A. Hanna	Claude M. Quigley	Fred E. Smith	Bernard L. Hill, Jr.
1959-1960	David E. Pope	A. D. Ellis, Jr.	Gordon C. Munsey	H. A. Chun
1960-1961	Claude M. Quigley	Harold V. Andersen	E. Ann Butler	Edward Marks
1961-1962	Harold V. Andersen	Theodore D. Cook	Benjamin J. Petrussek	Albert D. Warren
1962-1963	Albert D. Warren	Ernest H. Horton	Blair S. Parrott	Henry H. Phillips
1963-1964	Lyman D. Toulmin	E. Ann Butler	Charles C. Albers	John E. Kilgore
1964-1965	Howard L. Tipsword	Benjamin J. Petrussek	D. Jeter Smith	Emmett R. Adams
1965-1966	John B. Dunlap, Jr.	John J. W. Rogers	M. Ray Bane	Charles B. Morris
1966-1967	Hubert C. Skinner	Richard P. Zingula	Gene Ross Kellough	Gene B. Martin
1967-1968	Benjamin J. Petrussek	Dan McGregor	Garrett Briggs	Herbert A. Elliot, Jr.
1968-1969	William A. Atlee	Edgar B. O'Quinn	James W. Fowler	William E. Steinkraus
1969-1970	Fred L. Smith, Jr.	Kenneth L. Loep	Robert K. Sylvester	C. Wylie Poag, Jr.
1970-1971	Jules Braunstein	Douglas E. Jones	Walter H. Trenchard	Robert N. Davids
1971-1972	William W. Hay	William E. Steinkraus	Karl J. Koenig	Gerald R. Stude
1972-1973	C. Wylie Poag, Jr.	Emmett R. Adams	Gerald R. Stude	Gerald R. Stude
1973-1974	Edward B. Picou, Jr.	Walter H. Trenchard	Lawrence C. Menconi	Joan B. Stough
1974-1975	Emmett R. Adams	Edward Marks	Herbert A. Elliott, Jr.	J. Loyd Tuttle, Jr.
1975-1976	James L. Lamb	Lawrence C. Menconi	William S. Grubb	Doris M. Curtis
1976-1977	Clifton A. Couture	Eleanor T. Caldwell	Sherwood W. Wise, Jr.	John L. Carney
1977-1978	Gerald R. Stude	William P. S. Ventress	Gary R. Roberson	Joseph E. Boudreaux
1978-1979	Willard P. Leutze	Bob F. Perkins	Walter P. Kessinger	George C. Esker, III
1979-1980	Gene B. Martin	John L. Carney	Mary Ann Rafle	Kenneth A. Hodgkinson
1980-1981	Bob F. Perkins	Don G. Bebout	Sheila C. Barnette	Arthur S. Waterman
				Ted Karmen



# PUBLICATIONS

## OF THE

### GULF COAST ASSOCIATION OF GEOLOGICAL SOCIETIES

<u>TRANSACTIONS</u>	<u>Reg. Price</u>	<u>Sale Price*</u>
Volume 1 (1951) New Orleans .....	\$15.00	\$
Volume 2 (1952) Corpus Christi .....	9.00	5.00
Volume 3 (1953) Shreveport .....	9.00	
Volume 4 (1954) Houston .....	9.00	5.00
Volume 5 (1955) Biloxi .....	13.00	
Volume 6 (1956) San Antonio .....	15.00	
Volume 7 (1957) New Orleans .....	17.50	
Volume 8 (1958) Corpus Christi .....	15.00	
Volume 9 (1959) Houston .....	15.00	
Volume 10 (1960) Biloxi .....	9.00	5.00
Volume 11 (1961) San Antonio .....	9.00	5.00
Volume 12 (1962) New Orleans .....	17.00	
Volume 13 (1963) Shreveport .....	10.00	
Volume 14 (1964) Corpus Christi .....	17.00	
Volume 15 (1965) Houston .....	13.00	
Volume 16 (1966) Lafayette .....	18.00	
Volume 17 (1967) San Antonio .....	11.00	6.00
Volume 18 (1968) Jackson .....	11.00	6.00
Volume 19 (1969) Miami .....	12.00	6.00
Volume 20 (1970) Shreveport .....	12.00	6.00
Volume 21 (1971) New Orleans .....	13.00	6.00
Volume 22 (1972) Corpus Christi .....	13.00	
Volume 23 (1973) Houston .....	13.00	
Volume 24 (1974) Lafayette .....	15.00	
Volume 25 (1975) Jackson .....	17.50	
Volume 26 (1976) Shreveport .....	17.50	
Volume 27 (1977) Austin .....	18.50	
Volume 28 (1978) New Orleans .....	25.00	
Volume 29 (1979) San Antonio .....	22.50	
Volume 30 (1980) Lafayette .....	30.00	

	<u>Reg. Price</u>	<u>Sale Price</u>
Comprehensive Index .....	\$1.50	\$.75
Bibliography of Gulf Coast Geology (1970) Volume 1 & 2 Set .....	9.50	3.00
Bibliography of Gulf Coast Geology (1976) Volume 3 (special edition for 1969-74) .....	5.50	2.50
Bibliography of Gulf Coast Geology Set of above bibliography volumes (combination price) .....	12.50	5.00
Fault and Salt Map of South Louisiana 52" x 106" edited by W. E. Wallace, Jr. (1966) .....	20.00 (rolled)	
Faults of South and Central Texas, Map compiled by Delos R. Tucker (1967) .....	1.50	.75
Bathymetry of the Gulf of Mexico, Map by Elazar Uchupi (1967) .....	1.50	.75
Lower Wilcox Map, Reprinted from Volume 17 .....	1.50	

**NEW PUBLICATION SERIES (December 1980)**

Readings in Gulf Coast Geology.

- Volume 1. Depositional Systems in the Gulf Coast.  
Compiled by Edward C. Roy, Jr. Eleven papers excerpted  
from GCAGS *Transactions* that focus on this subject. .... \$9.00
- Volume 2. Petroleum Geology of the Cenozoic of the  
Central Gulf Coast, with Special Emphasis on the Miocene.  
Compiled by Raymond W. Stephens. Ten papers excerpted  
from GCAGS *Transactions* that focus on this subject. .... \$9.00

Total of Publications Requested      \$ \_\_\_\_\_  
Texas Residents: Include 5% Sales Tax      \$ \_\_\_\_\_  
Foreign Orders: Add \$1.00/Volume      \$ \_\_\_\_\_  
**TOTAL**      \$ \_\_\_\_\_

ALL ORDERS MUST BE PREPAID.

ENCLOSE CHECK OR CREDIT CARD INFORMATION.

Make check payable to: **Earth Enterprises - GCAGS**

Mail to: **P. O. Box 672  
Austin, Texas 78767**

Telephone: **512/345-3007**

- Master Card
- Visa

Card Account  
Number Here

Card  
Expiration \_\_\_\_\_

--	--	--	--	--	--	--	--	--	--	--	--	--	--	--	--	--	--	--	--

Signature \_\_\_\_\_

SHIPPING INFORMATION:

Name \_\_\_\_\_

Address \_\_\_\_\_

City/State \_\_\_\_\_ Zip Code \_\_\_\_\_

\*Sale Prices Effective Through December 31, 1981;

Regular Prices Effective After That Date

**GULF COAST SECTION  
SOCIETY OF ECONOMIC PALEONTOLOGISTS AND MINERALOGISTS  
List of Available Publications**

TYPE LOCALITIES OF THE GULF COAST

Unit II .....	\$2.50
Unit III .....	2.50

FIELD TRIP GUIDEBOOKS

Middle Eocene, Houston Co., Texas, 1961 .....	3.50
Lower Cretaceous in Moffat Mound Area near Lake Belton, Bell Co., Texas, 1979 (reprint of 1977 edition) .....	6.00
Middle Eocene Coastal Plain and Nearshore Deposits of East Texas: A Field Guide to the Queen City Formation and Related Papers, 1980 .....	10.00

SPECIAL VOLUMES

Proceedings of Symposium on Calcareous Nannofossils, 1973 .....	6.00
Geology of the Woodbine and Tuscaloosa Formations, Program and Abstracts, First Annual Research Conference, 1980 .....	6.00

ORDER FROM: Earth Enterprises  
P. O. Box 672  
Austin, Texas 78767  
Telephone: 512/345-3007

ALL ORDERS MUST BE PREPAID. Please enclose check or money order  
payable to EARTH ENTERPRISES — GCS-SEPM.

Texas Residents include 5% sales tax. Foreign orders add \$1.00 per  
volume.

Members of the GCS-SEPM are entitled to purchase one copy of each  
GCS-SEPM publication at a 20% discount off the list price.